




FACE TO FACE ACADEMY  
DISTRICT #4036

2023-24  
SAFE RETURN TO IN-PERSON LEARNING



Face to Face Academy was one of the first schools to reopen its doors for hybrid learning in July of 2020. The Safe Return to Learning Plan incorporates the **COVID Mitigation Steps** and Lessons Learned during the 2020-22 School Years. The Plan was created with input from Board Members, Staff, Parents, Students, and Community Experts. The principal goal of the plan is to continue to ensure a safe learning environment for students as the Academy **transitions from Hybrid to Full In-Person Learning**

# Safe Return to In-Person Learning Plan Addresses School Wide Priorities

## In-Person Learning

- Prioritize In-Building Experience as the Focal Point of the School while maintaining high safety standards
- Small and Stable Class Sizes of 8 to 12 students
- The ability to incorporate the increase in enrollment (ADM = 90)

## Experiential Learning

- Reincorporate specialty/elective classes, recreation class, field trips, wilderness program, and bringing in outside providers.
- Provide space to implement and grow a Work Based Learning Program

## Maintain Innovations

- Continue to utilize the organization provided by Google Classroom
- Transition from Distance Learning to Equitable Access Learning Option for students with barriers to returning to the building on a consistent basis.
- Simplify the Schedule and allow for a more manageable school day



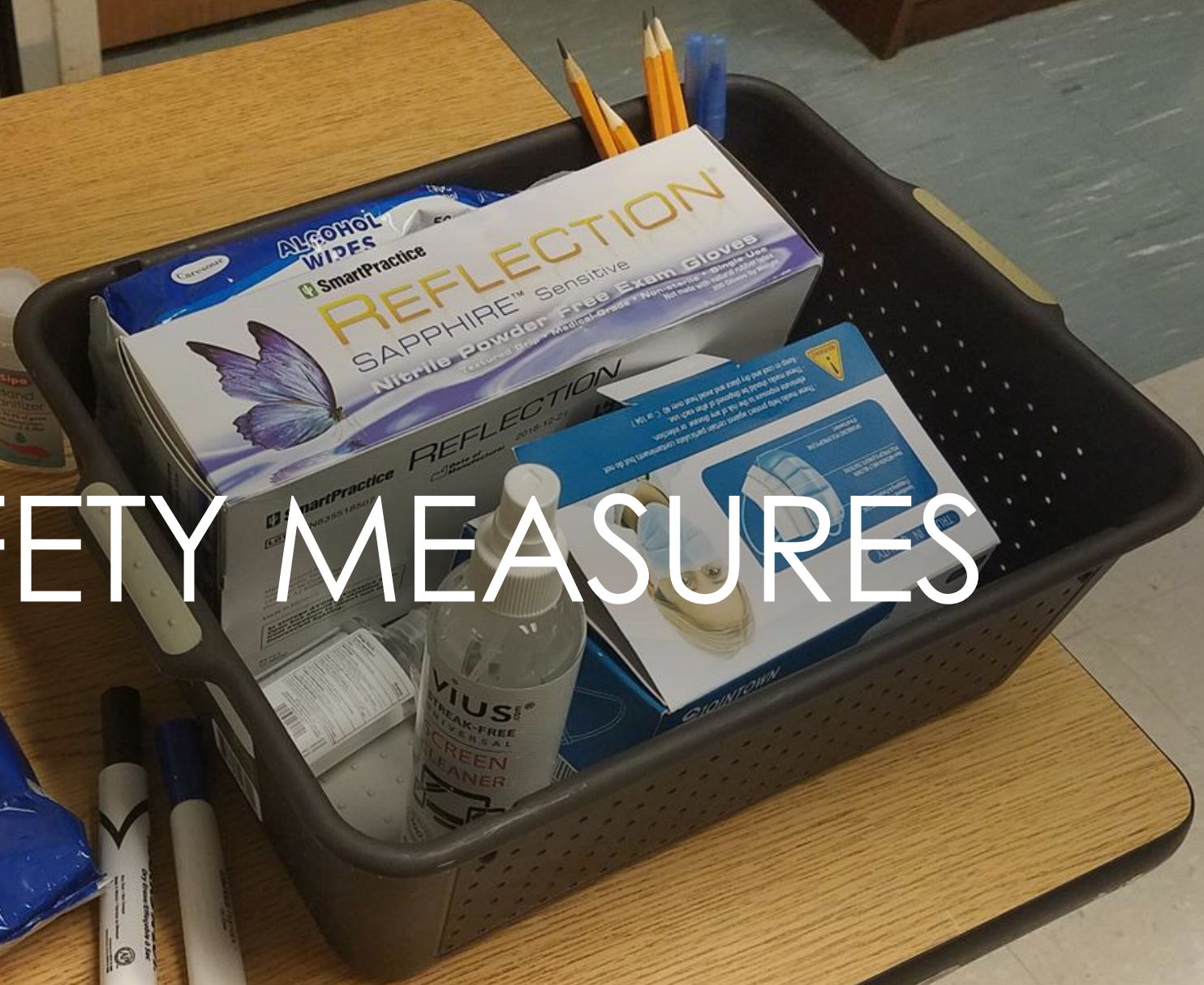
COVID MITIGATION  
STRATEGIES: THREE  
LEVELS OF RESPONSE:  
HEALTH & SAFETY  
RUBRIC



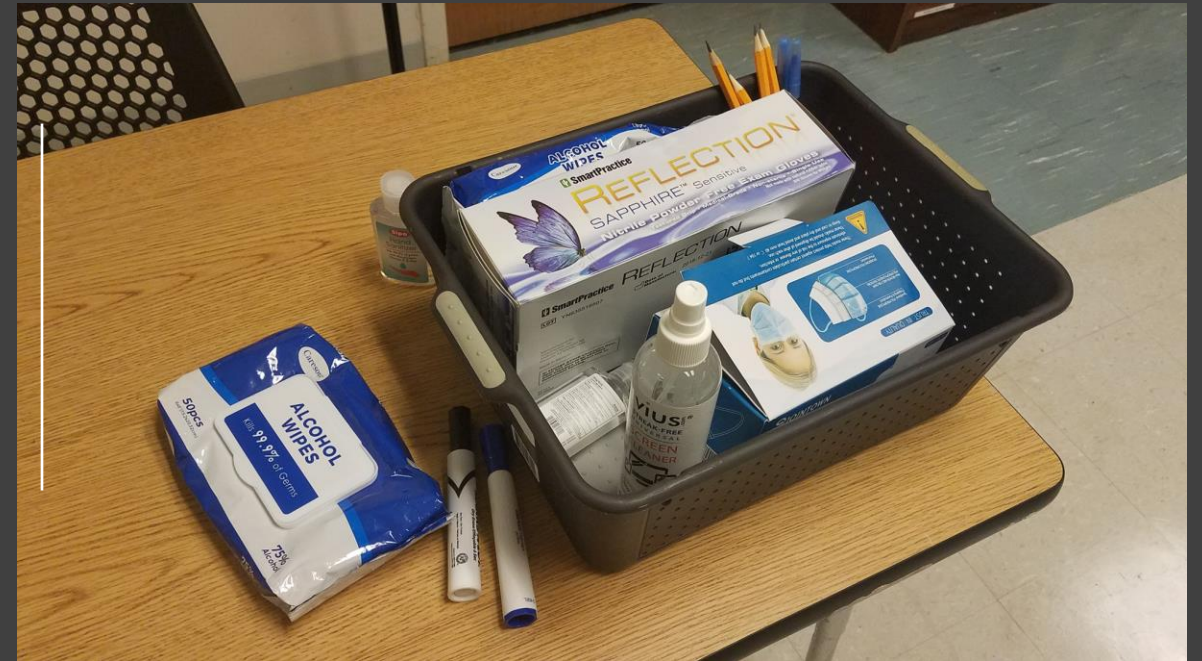




# SAFETY MEASURES







# HEALTH SCREENINGS

LINK TO HEALTH SCREENING: [STUDENT HEALTH SCREENING](#)



## A guide to WASHING YOUR HANDS



**Step 1**  
**Wet Hands**

Use warm water to remove any visible dirt or soiling.



**Step 2**  
**Apply Soap**

To prevent contamination, always use liquid soap.



**Step 3**  
**Lather & Scrub**  
20 seconds

Clean palms, back of hands, thumbs, each finger, between fingers and fingernails.



**Step 4**  
**Rinse Hands**  
20 seconds

Rinse under warm running water, pointing your fingers downwards.



**Step 5**  
**Turn Off Tap**

If possible use a paper towel or your elbow to prevent contamination.



**Step 6**  
**Dry Hands**

Dry thoroughly using a dry paper towel or a hand dryer.

Copyright 2016 by Australian Institute of Food Safety

To learn more call 1300 797 020 or visit [foodsafety.com.au](http://foodsafety.com.au)

 Australian Institute of Food Safety

# HYGIENE & PERSONAL MATERIALS

EACH STUDENT RECEIVES THEIR OWN BINDER AND MATERIALS (INCLUDING HAND SANITIZER)





## SMALL CLASS SIZES

(POD SIZES OF 8 TO 12)



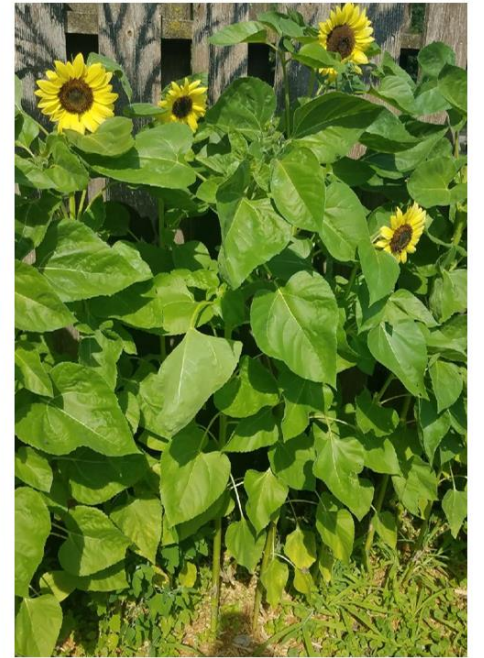




# IMPROVED AIR QUALITY HGA PROJECT & FILTRATION SYSTEMS



# Outdoor Space & Classroom





## Steps to follow if you believe a student or someone in your household may be showing signs or have been exposed to COVID 19:

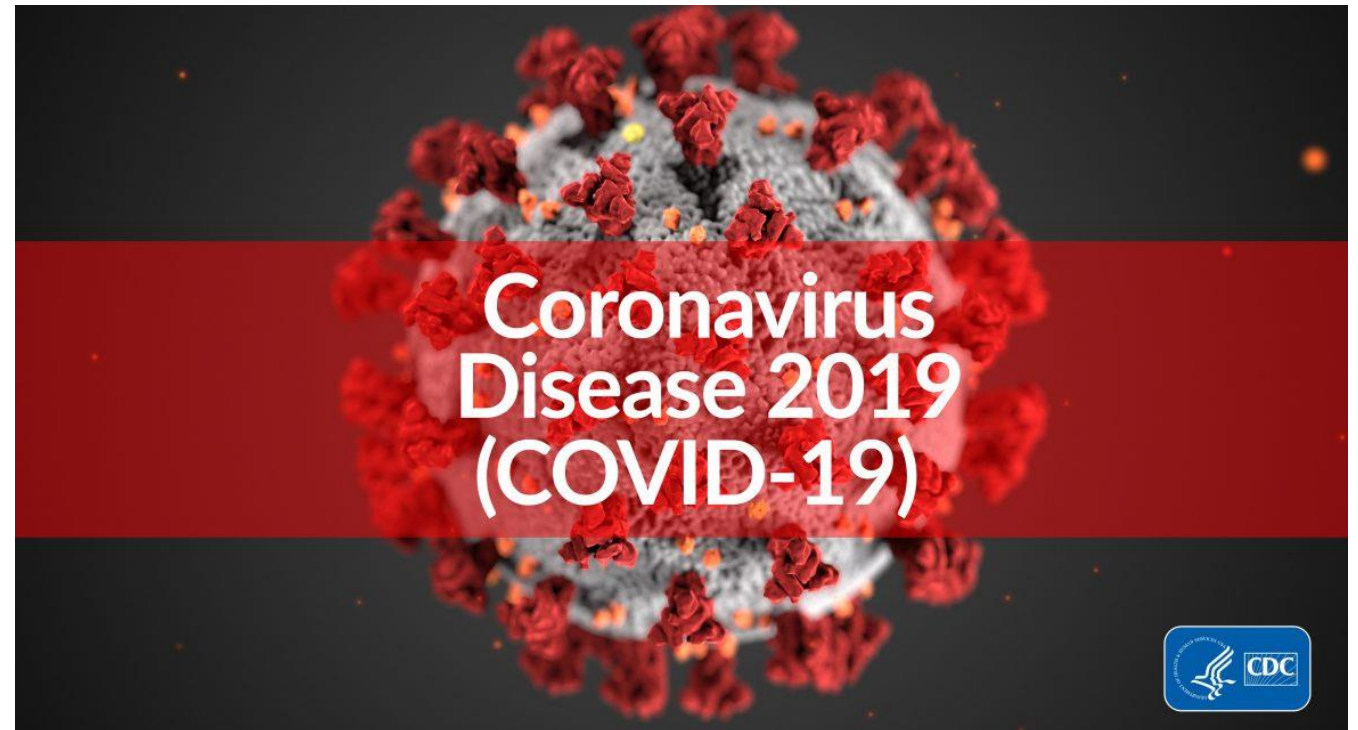
- 1) Contact the School at 651-772-5544
- 2) The COVID-19 Response Team will be in touch with you promptly.

### COVID 19 School Coordinator Information:

Darius Husain

651-772-5554

husaind@f2facademy.org



# ACADEMICS





Face to Face Credit Explained

Full Credit

- Full credit is earned when you have a passing score of 60% or better in each individual class. If you have achieved higher than the 60% you will have earned a letter grade that coincides with the percentage earned.
- A - 90% or better
- B - 80% or better
- C - 70% or better
- D - 60% or better
- Credits that can be earned every five weeks

Partial Credit

- Partial credit is achieved with a score between 40-59% in each individual class.
- Partial credit means that you did not meet the standard to earn the full value of credit in the class, but enough work was completed for the teacher to award you credit.

Hours

- The last way that credit can be earned is by earning hours in your classes. If you have a percentage score below 40% you will receive hours towards elective credit.
- Each class that is below 40% is tallied and added up to award you as much credit as possible.
- Hours count as elective credit only
- Every 5 percentage points in each class is worth 1 hour of cumulative elective credit.

Credits: 5/10 Week Marking Period

English	.5 / 1.0
Science	.5 / 1.0
Social Studies	.5 / 1.0
Math	.5 / 1.0
Art	.25 / .5
Specialty Classes	.5/ 1.0
Community Group	.25 / .5
Specialty Friday	.5 / 1.0
After School Programing	.5 / 1.0
Total Credits Possible	4.0 / 8.0

# A Menu of Instructional Hour Options

## Breakdown of Instructional Hours

- ALL Staff are available to students from 9:00 – 3:30 on ALL School Days.

<b>Related to Core School Day</b>	
In-Building Instruction	Up to 1020 Hours
Flexible Learning (English, Math, Social Studies)	240 Hours
After School Programing	120 Hours
<b>Experiential Learning</b>	
Work Based Learning (All)	Up to 40 hours
Work Based Learning (Approved Plan)	Up to 160 hours
Wilderness & Outdoor Program	Up to 180 hours



# Equitable Access Learning Model (EALM)

**EALM** allows students to choose the instructional model that best suits their needs and learning style. Students can learn as little as 20% Online (hybrid) to as much as 100% Online and receive the same quality instruction and support services as if they were in the building. Students also have several options to participate in in-person social activities that are important for healthy growth and development.

With class sizes no larger than 15, the EALM program is designed for students that have struggled in the traditional/larger school setting. It is also a great option for older students that are juggling academics with other real-life obligations such as work and family responsibilities. Online students are also eligible to earn credit through the Academy's accredited Work Based Learning Program.






## The Four Tiers of Equitable Access Learning

- **Tier 1**: Student is learning **80% – 100%** of the time In-Person. This tier constitutes the vast majority of Face to Face Academy Students. Every student has the option (but is NOT required) to learn up to 20% of their course content Online via live instruction through Google Meets. This proportion translates up to 4 classes per a typical core content class that meets for a Quarter. NO approval through the school is necessary to participate in this EALM Tier.
- **Tier 2**: Student is learning **50%-79%** of the time In-Person. Students in this category may learn up to 50% of their course content online. This proportion translates to 10 classes per a typical core content class that meets for a Quarter. In order to access this Tier, a student must have a pre-approved plan and expectations signed by the student's parent/guardian (if under 18), advisor, school administrator, and the student.





**Tier 3 & 4:** Less than 50% of the time In-Person. Students in this category may learn up to 100% of their course content online. This proportion translates up to 16 classes per a typical core content class that meets for a Quarter. This tier has specific eligibility requirements.

- A student in this Tier must have a pre-approved plan with expectations signed by the student's parent/guardian (if under 18), advisor, school administrator, and the student. The plan must be reapproved at a minimum of five weeks to maintain eligibility.

Help Link: [EALM Tier 3 & 4 Eligibility Requirements & Expectations](#)



# Google Meets & Google Makeups



Google Meets occur in conjunction with the class schedule periods 1 through 3



Google Make-Ups Occur during scheduled After School Office Hours



Each Student is only allowed 4 Google Meets per class/per quarter unless there is an approved plan



Initially, all students will be invited to the Google Meets (even if in building)



The number of Google Meets will be tracked for each class. Once a student uses all 4 Google meets, they will no longer be invited to that class.

# The Plan for Podding



Members of Group A will be podded together  
Members of Group B will be podded together



Ideal Pod size is 8 – 10 students. Maximum Pod size is 12 Students



Podding Boards will be located in the Upstairs Lobby and Downstairs Atrium



To Make Podding more manageable, Pods can stay relatively the same from Monday to Thursday with slight adjustments as needed



Can be used as a behavior intervention tool or as an incentive



# Specialty Classes & After School Program:

## Social/Emotional/Life Skills/Supporting the Core

### 4<sup>th</sup> Period (Specialty):

Meets twice a week. Phy-Ed, Health, Core Content, Experiential Activities

### After School Activities:

Focus on Social Emotional Well Being while offering students an opportunity to earn credit.

### Teacher Office Hours

Designated time to meet with teachers for help on core content assignments

## **SPECIALTY FRIDAY**

- 1) MANDATORY SCHOOL DAYS
- 2) 4 TO 5 CHOICES INCLUDING OPTIONS FOR IN PERSON OR ONLINE
- 3) FIELD TRIP OPPORTUNITIES
- 4) .5 CREDIT AWARDED EVERY 5 WEEKS

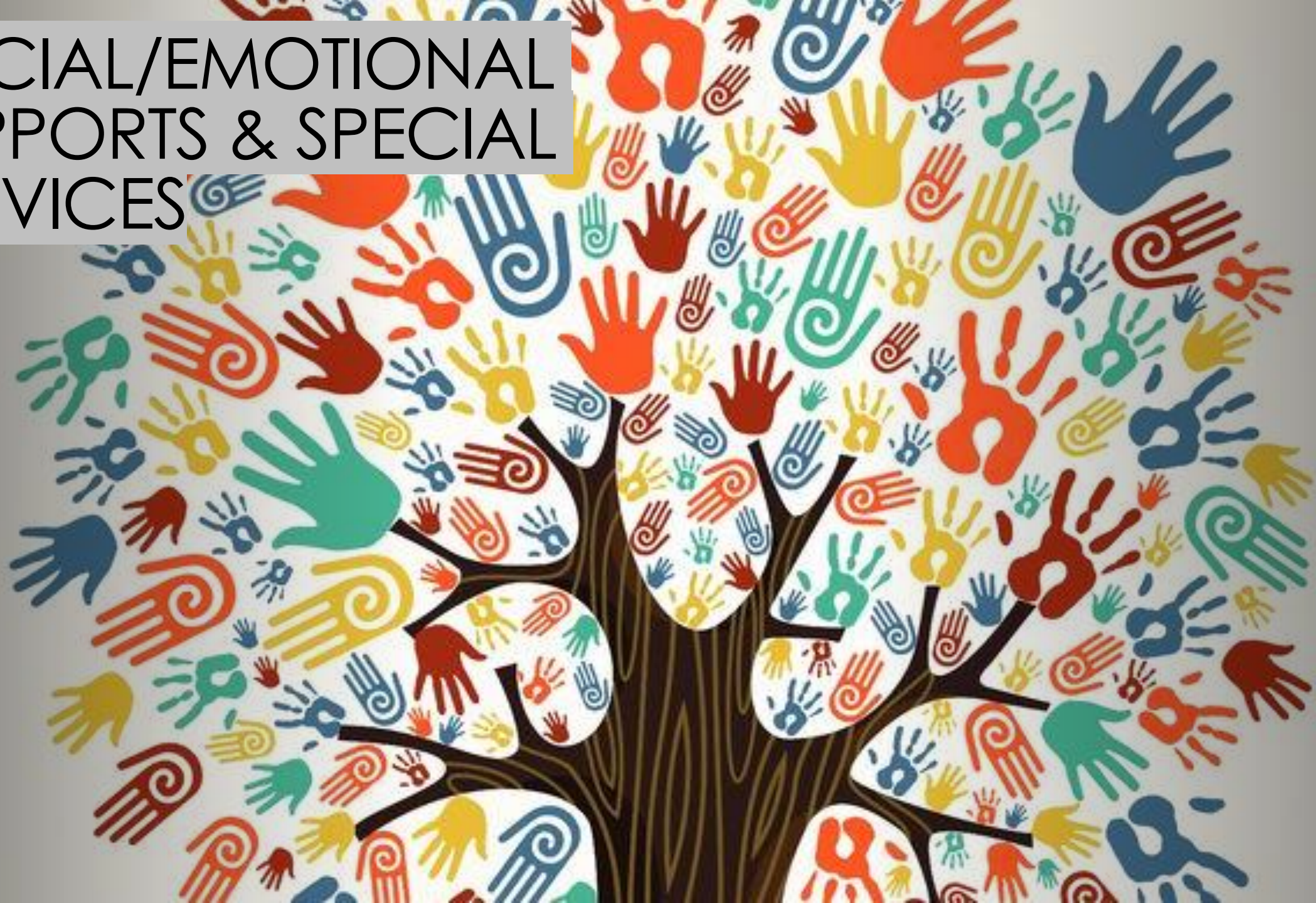
### **EXAMPLES OF SPECIALTY FRIDAYS INCLUDE:**

- \*CERAMICS (OR ART RELATED)
  - \*LITERATURE CLUB (OR ENGLISH RELATED)
  - \*HEALTH/PHY-ED (BIKING/PADDLING BOARDING/CANOEING)
  - \*STUDY HALL WITH LICENSED CORE TEACHER
  - \*MUSIC
  - \*WORK-BASED LEARNING
- \*\*SPECIAL LUNCH ON SPECIALTY FRIDAYS AS WELL AS RAFFLES.**





# SOCIAL/EMOTIONAL SUPPORTS & SPECIAL SERVICES



# Comprehensive Social/Emotional Supports:

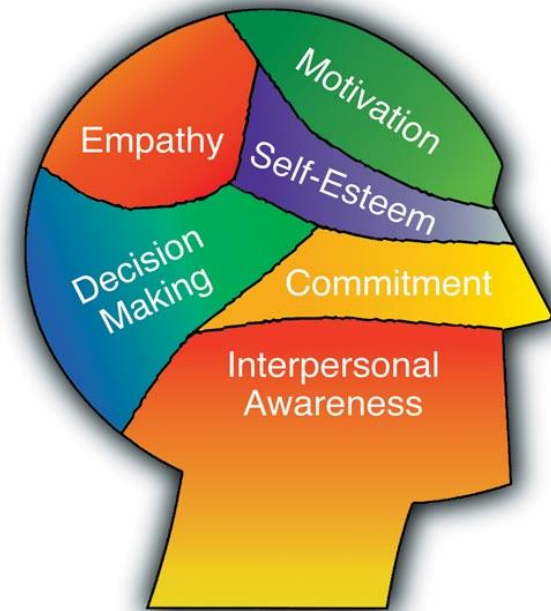
- 1) Face to Face Academy has been and will continue to be ahead of the curve in regard to the social emotional well-being of our students. With a student body of 85, Face to Face provides a social emotional team of five staff members to connect with students about mental health needs as well as resources to other providers in the Twin Cities Metro.
- 2) Face to Face Academy will continue to support the mental health needs of students by providing daily check-ins with a team member to assess their mental health as well as their social emotional well-being.
- 3) A social/emotional team member will support a portion of the school population that they have built rapport with. Each school day, the social workers will check-in with their caseload of students and engage in conversations pertaining to their mental and physical well-being.





## Comprehensive Social/Emotional Supports (cont.):

- 4) These check-ins will be completed through various modalities including phone, text, email, google classroom, video platforms, and messaging.
- 5) The support team will be in daily contact with one another as well as the academic instructors in order to identify students with intensifying need and subsequently coordinate services.
- 6) Where applicable, the social/emotional team will work with its partner organization, Face to Face Health & Counseling, to provide more intensive counseling for students expressing this need.



## Social/Emotional Space

There are four spaces for social emotional support. These spaces are also appropriate for provider check-ins or one on work:

- \*Outdoor Space
- \*Multipurpose Room
- \*Fire Room
- \*Staff Office

Whenever applicable, the school will prioritize the outdoor space for social emotional supports or independent work.



Earth Room  
Max Capacity = 3

Check-Ins  
&  
Conferences

(Hybrid Phase 1)





## **CONTACT INFORMATION FOR SPECIAL-ED SUPPORT:**

<b>NAME</b>	<b>ROLE</b>	<b>EMAIL</b>	<b>PHONE NUMBER</b>
BRYAN:	SPECIAL-ED TEACHER	BAKKEB@F2FACADEMY.ORG	651-772-5553
JOHN:	SPECIAL-ED TEACHER	VASECKAJ@F2FACADEMY.ORG	651-772-5547
CHANA:	SCHOOL SOCIAL WORKER	OURAYC@F2FACADEMY.ORG	651-772-5540
RACHEL:	SCHOOL SOCIAL WORKER	SAMUELSON@F2FACADEMY.ORG	651-200-7529
TIM:	SCHOOL SOCIAL WORKER	ZWIERST@F2FACADEMY.ORG	651-772-5568
JENNIFER	504 COORDINATOR	<a href="mailto:PLUMJ@F2FACADEMY.ORG">PLUMJ@F2FACADEMY.ORG</a>	651-772-5548

## Parent Training & Technical Support:

Parents & Guardians have also had the opportunity to have access to the Plusportals where they can have up to date feedback on grades and missing assignments. This account is set during the intake when students first enroll in the school. Google Classroom also has the a “Parent/Guardian” feature that allows for a supportive adult to monitor student grades and assignment completion. Staff are committed to checking in with parents at least once a week. As part of the check-ins, staff are available to provide technical assistance and step by step navigation of these online systems.

### Contact Information for Special-Ed Support:

Name	Role	Email	Phone Number
Chana:	School Social Worker	ourayc@f2facademy.org	651-772-5540
Rachel:	School Social Worker	samuelson@f2facademy.org	651-200-7529
Tim:	School Social Worker	zwierst@f2facademy.org	651-772-5568
Darius	School Director	<a href="mailto:husaind@f2facademy.org">husaind@f2facademy.org</a>	651-772-5554

